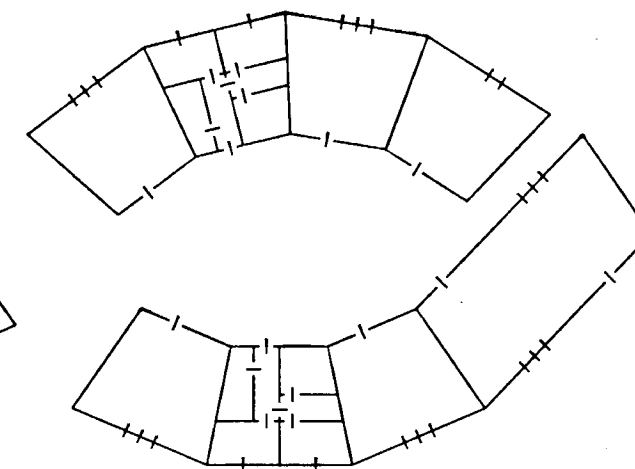
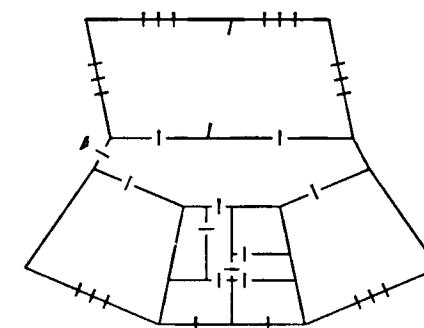
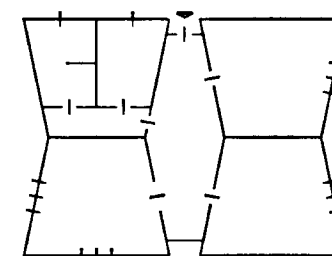
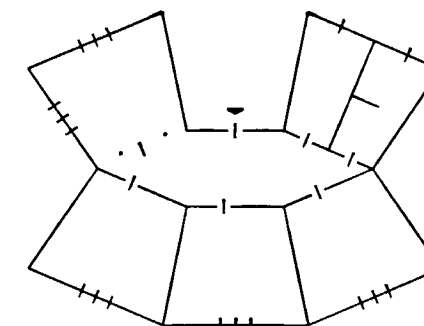
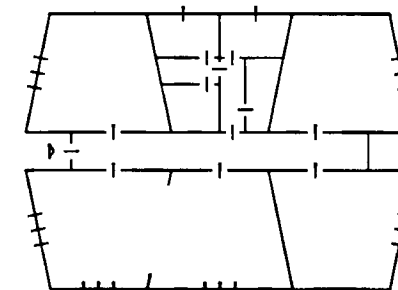
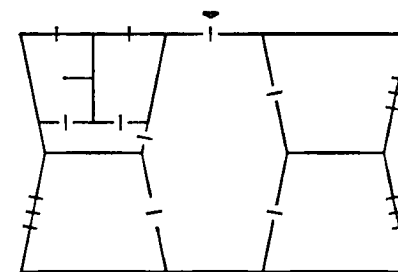
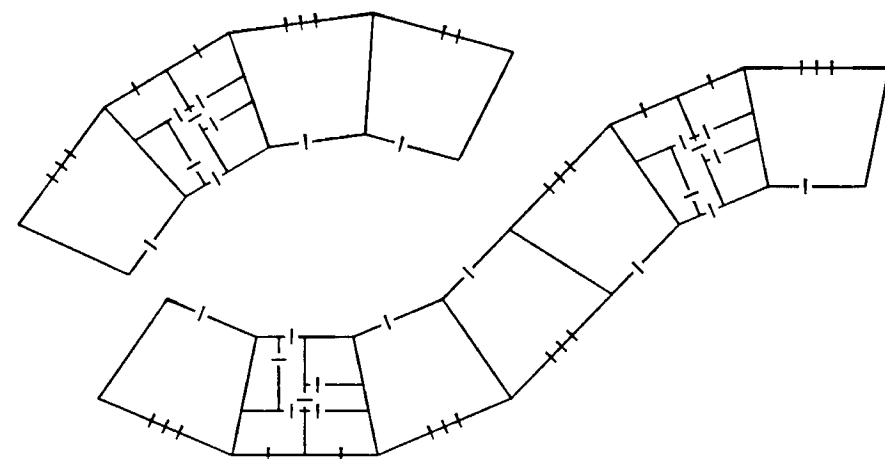
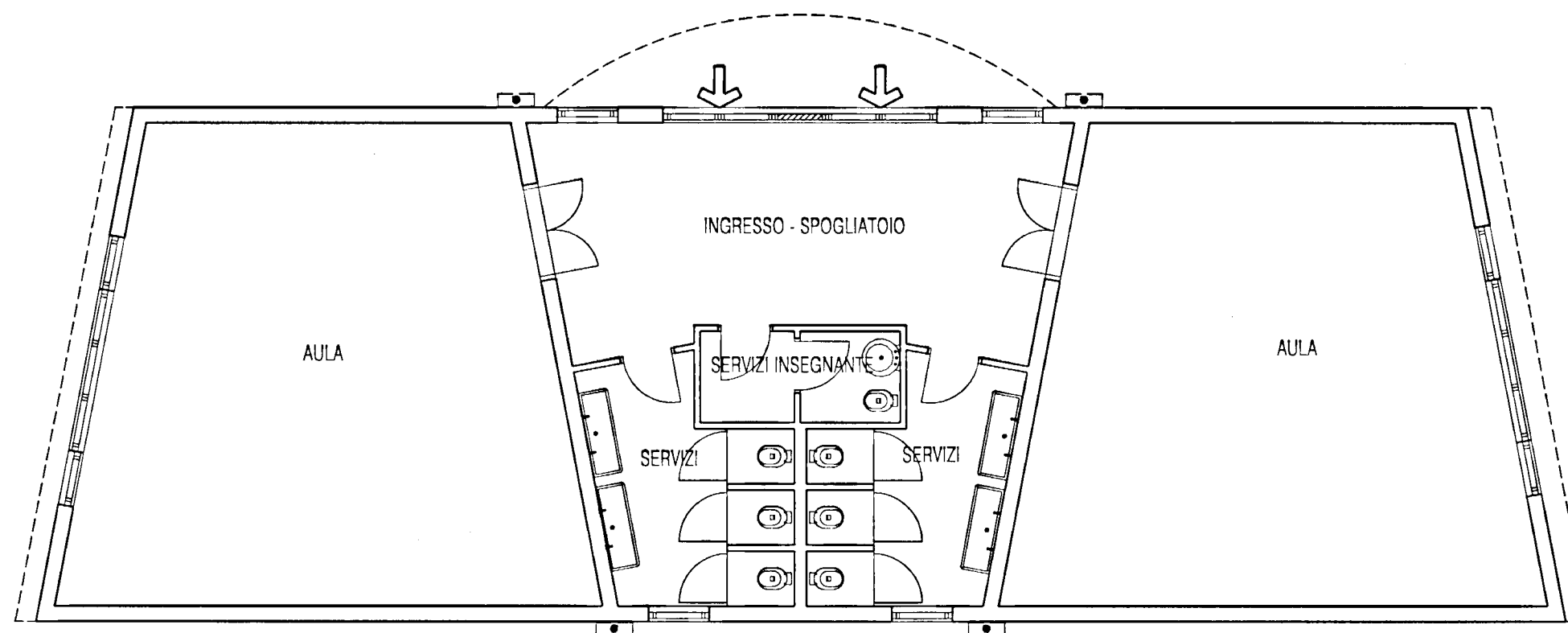




FORUM INTERNAZIONALE UOMO E ARCHITETTURA - SEZIONE ITALIANA - GRUPPO DI MILANO
Via Pergolesi, 26 - 20124 - Milano - tel/fax ++39 02 6692249



POSSIBILI SOLUZIONI AGGREGATIVE



PIANTA DELLO SCHEMA A TRE MODULI IN LINEA
COPERTURA A SETTORI DI CILINDRO